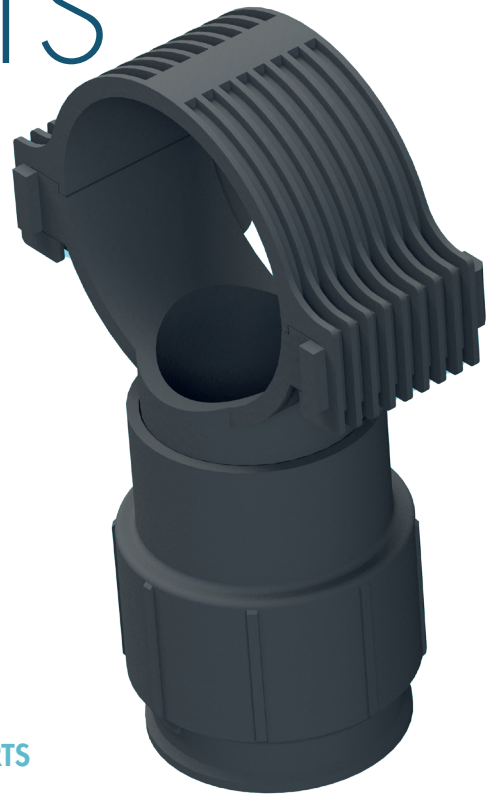


PIPE SUPPORTS

PPGF30 SUPPORTS

Manifolds and laterals supports are available in different materials and sizes, adapting to the specific requirements of each aeration system. For plastic pipes (uPVC and PPh) with diameters D90 and D110, supports are available in PPGF30, AISI304L and AISI316L, while for pipes with diameters above D110 or for stainless steel pipe systems, only holders in AISI 304L and AISI 316L are provided.

A distinctive advantage of PPGF30 supports is their height adjustment capability with the pipe mounted on the support. All steel brackets up to D110/114.3 require only one anchor bolt, which facilitates assembly on site. The brackets allow tube adjustment from 150 to 290 mm. For higher adjustment heights, please consult WTE.

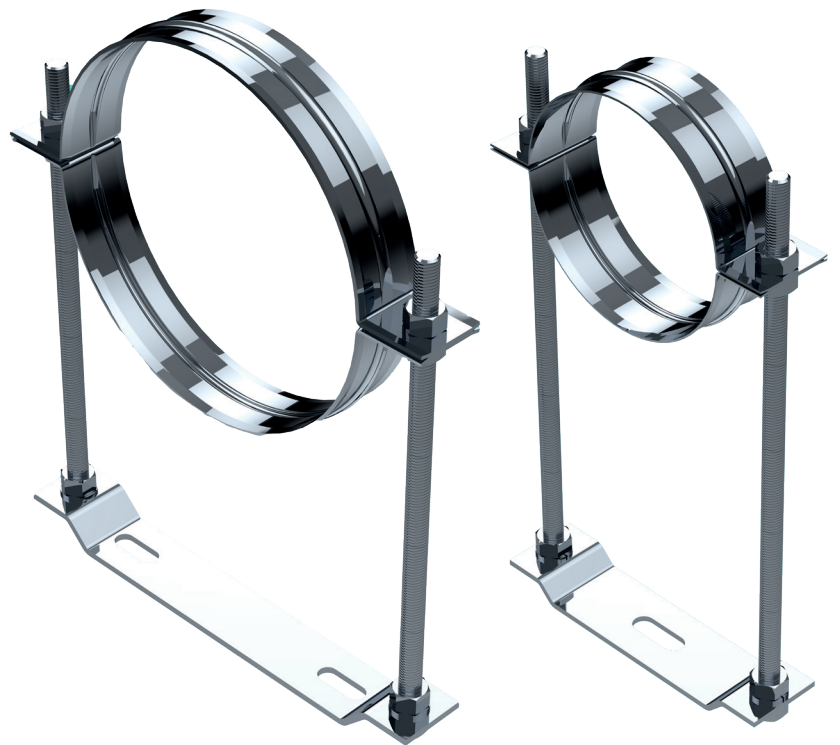


PPGF30 PIPE SUPPORTS

Code	Description
10334	Support D90 H220 - PPGF30 with mechanical anchor bolt M10x105 - AISI 316L
10335	Support D110 H220 - PPGF30 with mechanical anchor bolt M10x105 - AISI 316L
10336	Support D90 H220 - PPGF30 with mechanical anchor bolt M10x105 - AISI 316L
10337	Support D110 H290 - PPGF30 with mechanical anchor bolt M10x105 - AISI 316L

STAINLESS STEEL PIPE SUPPORTS AISI 304L/316L

WTE plastic pipe supports are designed to allow the pipes to slide after thermal changes (type BFS supports). For stainless steel grids or where a section of pipe needs to be rigid near an expansion joint, BFR rigid supports are available.



Data subject to change without notice

WTE SRL Via Re Depaolini,52 • 20015 Parabiago (MI) Italy



Tel. +39 0331 490449 • www.wteitaly.com • info@wteitaly.com